

# Double Eclipse Summer on East End: An Unforgettable Celestial Spectacle



## Double Eclipse (Summer on East End Book 2)

by Melissa de la Cruz

★★★★☆ 4.7 out of 5

Language : English

Paperback : 24 pages

Item Weight : 4 ounces

Dimensions : 8.27 x 0.06 x 11.69 inches

File size : 3473 KB

Text-to-Speech : Enabled

Screen Reader : Supported

Enhanced typesetting : Enabled

Print length : 332 pages

FREE

DOWNLOAD E-BOOK



## **Immerse Yourself in the Celestial Dance**

This summer, the East End awaits an extraordinary celestial showcase as two eclipses grace the sky within a span of just two weeks. This rare phenomenon, known as the Double Eclipse Summer, offers a once-in-a-lifetime opportunity to witness the awe-inspiring power of the cosmos. Prepare yourself for an unforgettable astronomical spectacle that will leave you captivated.

### **Eclipses Unveiled: A Celestial Symphony**

The first of these celestial events, a solar eclipse, will occur on April 8th. This breathtaking phenomenon happens when the Moon passes directly between the Sun and the Earth, casting an eerie twilight upon the land. As darkness descends during the day, stars and planets become visible, creating an otherworldly ambiance.

Following the solar eclipse, the East End will witness a lunar eclipse on April 22nd. During this celestial ballet, the Earth moves between the Sun and the Moon, casting a deep shadow upon our lunar neighbor. As a result, the Moon takes on a stunning reddish hue, earning it the nickname "Blood Moon." This spectacular transformation will paint the night sky in a mesmerizing shade of crimson.

### **East End: Your Front-Row Seat to the Celestial Theater**

The East End of Long Island, renowned for its pristine beaches, quaint towns, and rich maritime history, will provide an ideal venue for observing the Double Eclipse Summer. Escape the hustle and bustle of the city and immerse yourself in the tranquil surroundings of this coastal paradise.

Whether you're a seasoned astronomer or simply an enthusiast seeking an unforgettable experience, the East End offers a wealth of options for eclipse viewing. From secluded beaches to scenic parks, there are countless spots where you can set up your telescope or simply lie back and marvel at the celestial wonders unfolding above.

## **Insider Tips for an Enhanced Experience**

To maximize your Double Eclipse Summer experience, consider the following insider tips:

- **Plan in advance:** Secure accommodations and transportation early, as demand will be high during this special event.
- **Check weather forecasts:** While the East End typically enjoys favorable weather conditions, it's always wise to have a backup plan in case of inclement skies.
- **Use proper eye protection:** Never look directly at the Sun during a solar eclipse without proper solar eclipse glasses or a solar filter for telescopes.
- **Bring binoculars or a telescope:** Enhance your viewing experience by bringing optical equipment to get a closer look at the celestial dancers.
- **Share the experience:** Create memories that will last a lifetime by sharing this unforgettable celestial event with friends, family, or fellow astronomy enthusiasts.

## **Unveiling the Wonders of the Double Eclipse Summer**

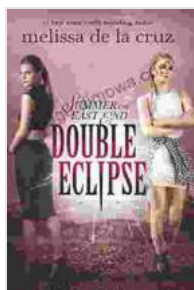
Prepare to be mesmerized by the Double Eclipse Summer on East End, where the celestial tapestry will unfold before your eyes. Witness the ethereal beauty of a total solar eclipse, where the Sun's corona takes center stage. Marvel at the transformation of the Moon into a Blood Moon, as its surface glows with an otherworldly crimson hue.

This rare celestial event is not only a spectacle to behold but also an opportunity to deepen our connection to the wonders of the universe. Join us on East End for the Double Eclipse Summer, an unforgettable journey where the cosmos will ignite your imagination and leave you in awe.

## Book Your Double Eclipse Summer Experience Today

Don't miss out on this extraordinary astronomical event. Book your accommodation and transportation now to secure your place for the Double Eclipse Summer on East End. Let the East End become your celestial sanctuary as you witness the dance of the Sun, Moon, and Earth in a breathtaking celestial spectacle.

Book Now



## Double Eclipse (Summer on East End Book 2)

by Melissa de la Cruz

★★★★☆ 4.7 out of 5

Language : English

Paperback : 24 pages

Item Weight : 4 ounces

Dimensions : 8.27 x 0.06 x 11.69 inches

File size : 3473 KB

Text-to-Speech : Enabled

Screen Reader : Supported

Enhanced typesetting : Enabled

Print length : 332 pages

FREE

DOWNLOAD E-BOOK



## Unveiling the Legacy of New England Salmon Hatcheries and Salmon Fisheries in the Late 19th Century

Journey back in time to the late 19th century, a period marked by significant advancements in the field of fisheries management and aquaculture. New...



## Embark on a Literary Adventure with Oliver Twist: A Comprehensive SparkNotes Guide

Unveiling the Complex World of Oliver Twist: A Captivating Journey In the shadowy labyrinth of 19th-century London, a young orphan named Oliver Twist embarks on a...